

# Digital MRV in action: The ASCENT Regional dMRV Platform

Ahid Maeresera  
Technical Manager  
COMESA

*Achieving Results Faster, Together*

Implemented by



Supported by

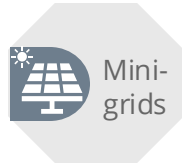


**ASCENT**  
**WEEK**  
**2025**

The logo for ASCENT WEEK 2025 is contained within a white hexagonal shape with a black border. The word "ASCENT" is in a large, bold, dark blue font. Below it, the word "WEEK" is in a white font inside a blue rectangular bar. At the bottom, the year "2025" is in a bold, dark blue font. The background of the slide features three triangular images: a welder in a red shirt and yellow goggles, a woman in a pink shirt looking at a chalkboard, and a woman in an orange shirt smiling while operating a sewing machine.

# Summary of data flows

Connection data → Energy access data → National dMRV → ASCENT Regional dMRV



## System data

Consumption  
Capacity  
Load

## Customer data

ID number  
Gender  
Type of customer

## Payment data

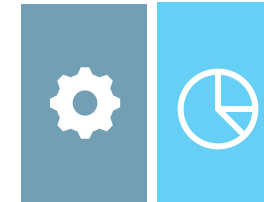
Payment amounts  
Payment dates  
Account number

## Validation & Verification

### Automated



In-built validation checks for completeness and consistency  
Verification through third-party data (triangulation)



### Analysis at different levels:

- Program
- Technology
- Company
- Connection

### Manual



Independent Verification Agent:  
Phone/ field surveys



### Objectives:

- Aggregation
- Monitoring / Results Framework
- Analytics
- Carbon finance

*Achieving Results Faster, Together*

# Linking national platforms to the ASCENT Regional dMRV platform

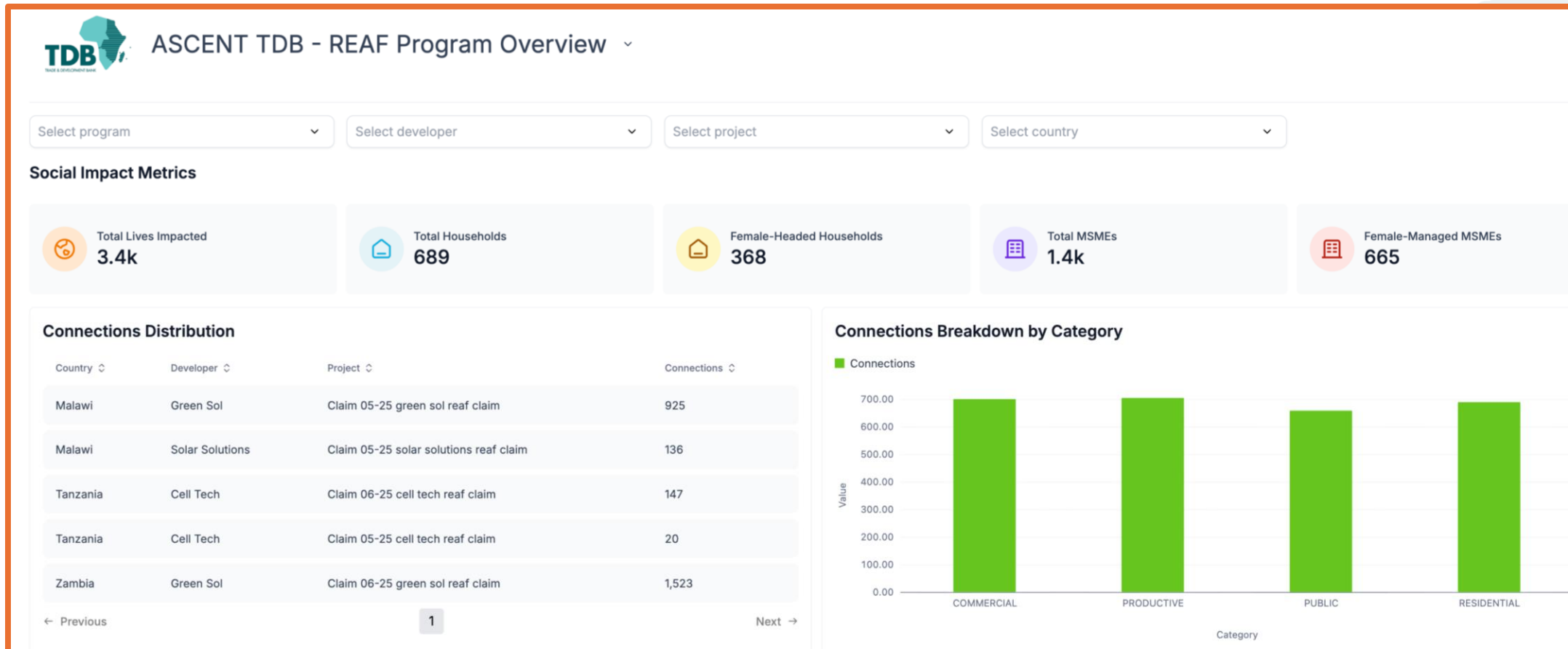
## Example of the integration with Odyssey

1. Odyssey provides the Trade Development Bank (TDB) with rich data insights



KPIs based on the results framework

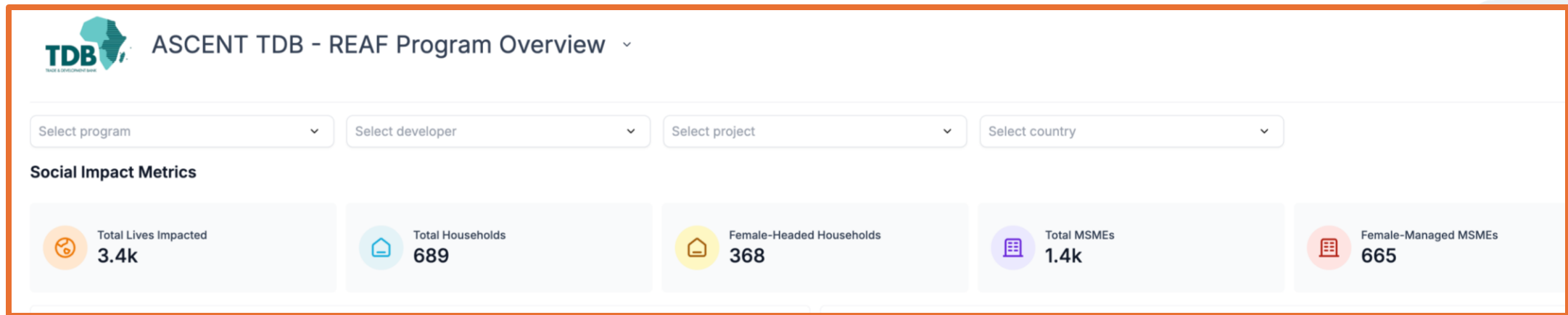
Details on claims & tailored analytics



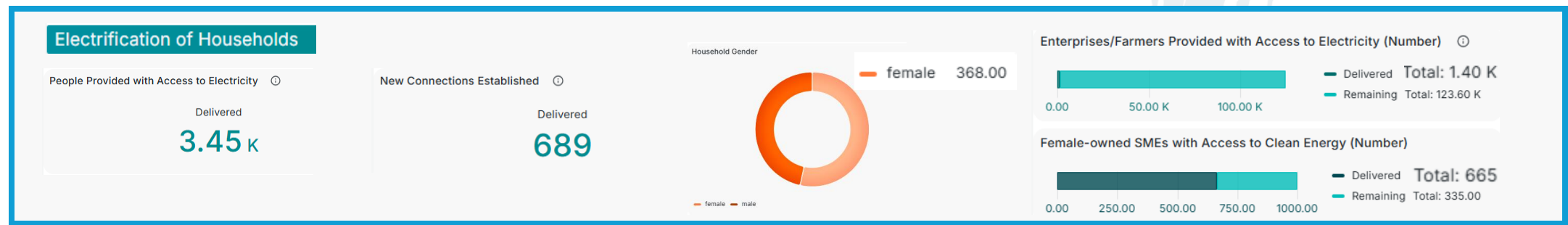
# Linking national platforms to ASCENT's Regional dMRV platform

## Example of the integration with Odyssey

1. Odyssey provides the Trade Development Bank (TDB) with rich data insights
2. Data is automatically transferred to and displayed in ASCENT's regional dMRV platform



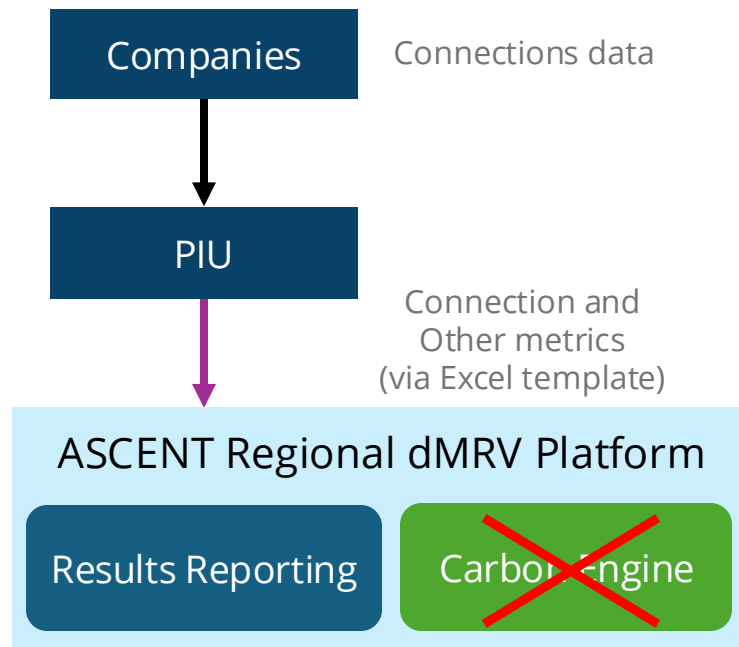
ASCENT Regional dMRV platform



# Reporting approaches until national dMRV active

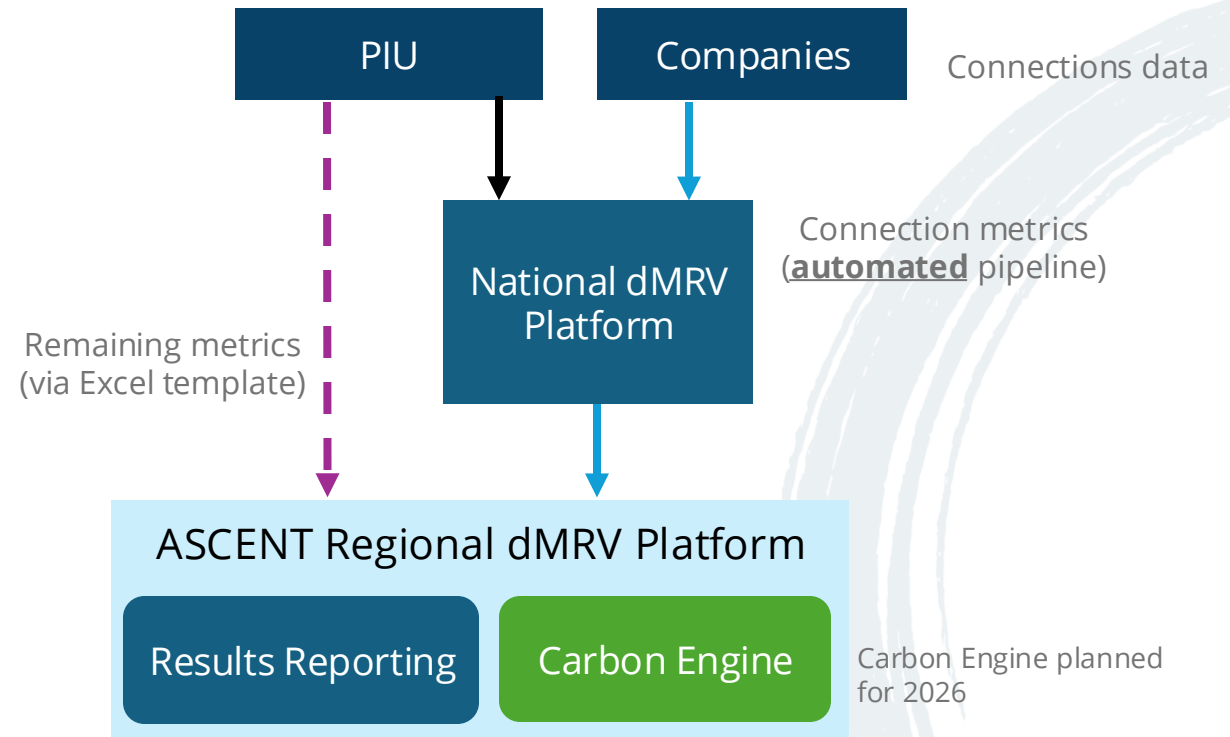
## Without National dMRV Platform

Manual upload of connection and other metrics via Excel



## With National dMRV Platform

Automated import of connection metrics via national dMRV platform and manual upload of remaining metrics via Excel\*

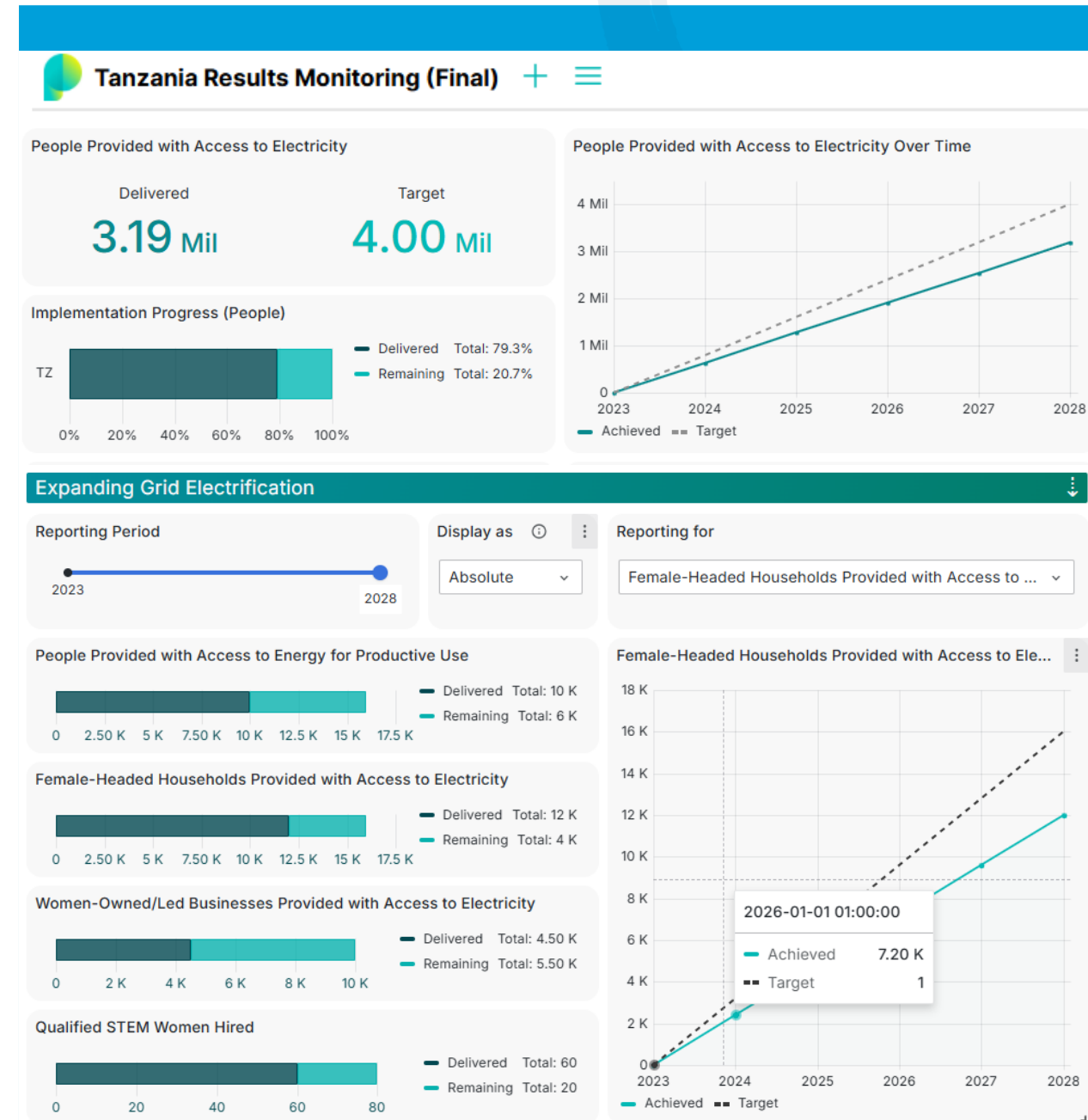


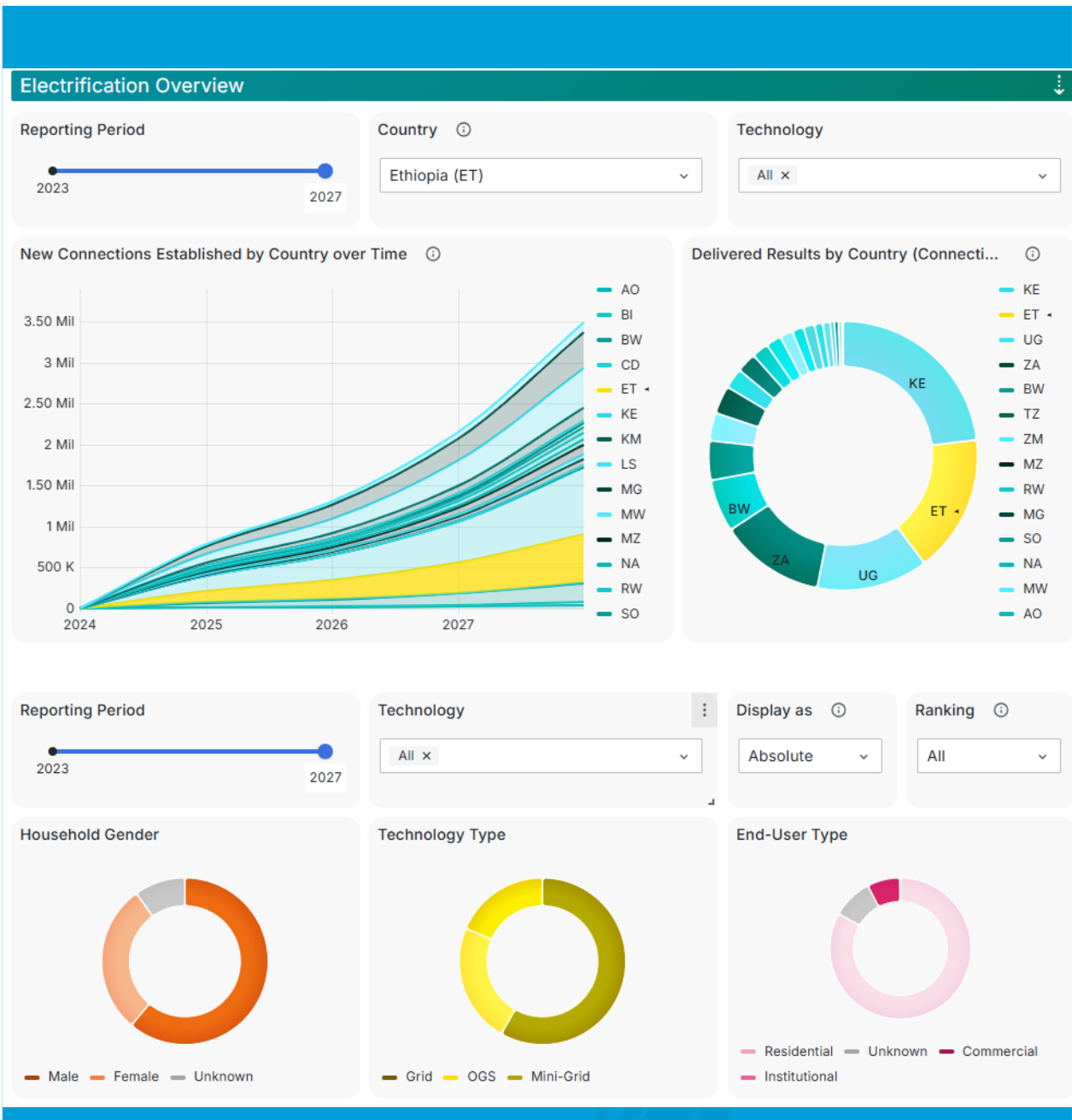
- Data collection or import depends on program
- Automated data import
- Manual data import via Excel template (like standard WB progress reporting)

\* Some portfolio metrics may be possible to pull directly from the dMRV platform at a later date

# Country-Specific Dashboards

- Provide real-time overview over the progress at the national level in relation to the objectives of the results framework of the Project Appraisal Document (PAD)
- Time-series visualisations for tracking progress in time
- Analytics based on PAD, examples:
  - Components / RBF windows
  - Technologies
  - Types of end-users
  - Etc.





# ASCENT Program Results Monitoring

- A set of visualisations, analytics and dashboards enabling the tracking of results of the entire ASCENT Program against the targets
- Cross-country comparison for learning and alignment
- Analytics based on:
  - Countries
  - Technologies
  - Types of end-users
  - Etc.

*Achieving Results Faster, Together*

## Reminders:

- please bring your own laptop to the dMRV training on Friday
- please designate one dMRV responsible per PIU and provide their name & email address via email to

[AMaeresera@comesa.int](mailto:AMaeresera@comesa.int) and [RSandru@worldbank.org](mailto:RSandru@worldbank.org)

# Thank you!